



INKKLINGS

Bulletin of Interpretive Ideas

March 2008 Volume 8, Issue 1

Current Project List

- **Indiana Department of Natural Resources.**
Interpretive Sign Design,
Charlestown SP
Fort Harrison SP
Patoka Reservoir
Shakamak SP
Shades SP
Turkey Run SP
Mounds State Park
Wyandotte Caves
Clifty Falls State Park
Generic Division-wide signs
Interpretive Master Plan,
Turkey Run State Park
Pokagon State Park
Interpretive Exhibit Mgmt.
Spring Mill State Park
McCormick's Creek SP
- **Champaign County (IL) Forest Preserve District**
Interpretive Sign Design
- **Westfield (IN) Parks and Recreation**
Interpretive Sign Design
- **Kalamazoo Nature Center (MI)**
Trail Map Design
- **Elkhart County (IN) Parks**
Interpretive Sign Design
- **Eli Lilly & Company (IN)**
Interpretive Sign Design
- **City of Bluffton (IN)**
Interpretive Sign Design

Interpretive Planning:

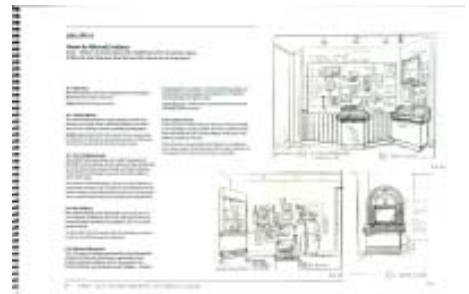
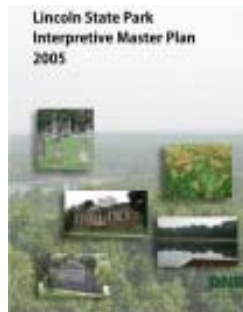
Getting from idea to finished exhibits

Lise Schools, with input from Ginger Murphy

At times confusion is expressed about the amount of planning recommended for getting new exhibits. "What's the difference between a Conceptual Plan and an Exhibit Design?" What is the difference between a Design contract and a Design/Build contract?" and lastly, "Why all this planning?" Each document is a step in a process and has a specific purpose. The following provides an overview of each step.

1. Interpretive Plan

A comprehensive interpretive plan assimilates the site's natural and cultural resources and from this develops a theme. Combining the theme with the Existing Conditions (audiences, staff, facilities and community resources), recommendations are made to improve interpretive communication. Recommendations are presented in phases with cost estimates. An interpretive plan can be incorporated into grant applications and other funding requests.



Conceptual Plan, ICON Exhibits

3. Exhibit Design

Once the conceptual design is approved, each exhibit is developed into a ready-to-build blueprint. Itemized construction and installation costs are included. Text labels are provided. If the project is a Build Only project, this document is included in the RFP.

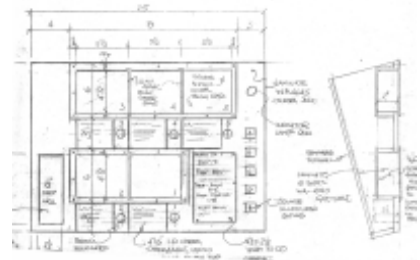


Exhibit Design, Lifespace Design

2. Exhibit Conceptual Plan

This document uses the interpretive plan's theme as the foundation for the exhibit gallery's story. Exhibits concepts explain the theme in a sequential path through the display area. A conceptual plan includes sketches of each exhibit, a description, interactive components and a placement on a floor plan. Text labels may also be part of a conceptual plan. A cost estimate is included. If the project is a Design/Build contract, this document is included in the Request for Proposals (RFP).

4. Fabrication

Using the Exhibit Design, a contract is awarded to construct and install the exhibits.

Terms

Design/Build: Steps 2, 3 and 4 are under one contract. This allows one contractor to handle the project from start to finish.
Design Only/Build Only: Steps 2, 3 and 4 are separate contracts. This approach may
(continued next page)



INKLINGS

Interpreive Ideas

P.O. Box 355

Okemos, MI 48805-0355

517/347-0861

lise@interpretiveideas.com

Lise Schools, Owner

Visit our website www.interpretiveideas.com

(continued from front)

be used when there is limited funding. It allows the client to get the design done, then move to the next phase as funding becomes available. The client may not have the same contractor for fabrication as they did for design.